

# FOR SALE

## Shamal



### ESSENTIALS

PRICE	– <b>US\$2,600,000</b>
LOCATION	– <b>Mahogany Drive, Barbados</b>
TYPE	– <b>House</b>
ROOMS	– <b>4 Bed / 4 Bath</b>
LAND AREA	– <b>40,118 sq. ft.</b>
FLOOR AREA	– <b>4,197 sq. ft.</b>
	– <b>Furnished</b>

### OVERVIEW

This superbly maintained 4 bedroom, 4 bathroom villa is situated within the exclusive, world-class Royal Westmoreland Golf Resort.

### WHAT WE LOVE

- Extremely private location on The Royal Westmoreland Estate
- One acre lot with golf and sea views
- Palm-lined picturesque driveway

Terra Luxury, Newton House, Battaleys, St. Peter BB 26094, Barbados - Tel: 1 622-2618.  
Toll free US and Canada: 1-844-333-8888

**[www.terraluxury.com](http://www.terraluxury.com)**

f.<http://www.facebook.com/TerraLuxuryBarbados/>  
t.[http://twitter.com/Terra\\_Luxury](http://twitter.com/Terra_Luxury)  
i.<http://www.instagram.com/terraluxury>

Errors & Omissions Excepted

# FOR SALE

## Shamal



### DESCRIPTION

---

This superbly maintained 4 bedroom, 4 bathroom villa is situated within the exclusive, member's only, world-class Royal Westmoreland Golf Resort in Barbados. Shamal is located at the end of Mahogany Drive on one acre of land and enjoys sublime privacy with stunning golf views and a window to the sea. It's being offered for sale fully furnished and boasts high quality finishes throughout. The entrance is a palm tree lined paved driveway and the gardens have been beautifully landscaped providing an exceptionally attractive access to the entrance of house. The ground floor level is designed on open plan principles featuring high pickled-pine ceilings, spacious indoor and outdoor living, entertainment and dining areas, a very large well-equipped state of the art kitchen, a separate staff quarter including a laundry room. There is a bedroom on this level, larger with a terrace and garden view. There is a smaller guest bedroom on this level as well with an adjoining bathroom. The first floor features 2 large en-suite bedrooms, each with a walk in closet and either could be used as the master bedroom and both have access to a balcony overlooking the swimming pool and facing the golf and sea views. Shamal offers an excellent opportunity on an established golf estate.

### FEATURES & AMENITIES

---

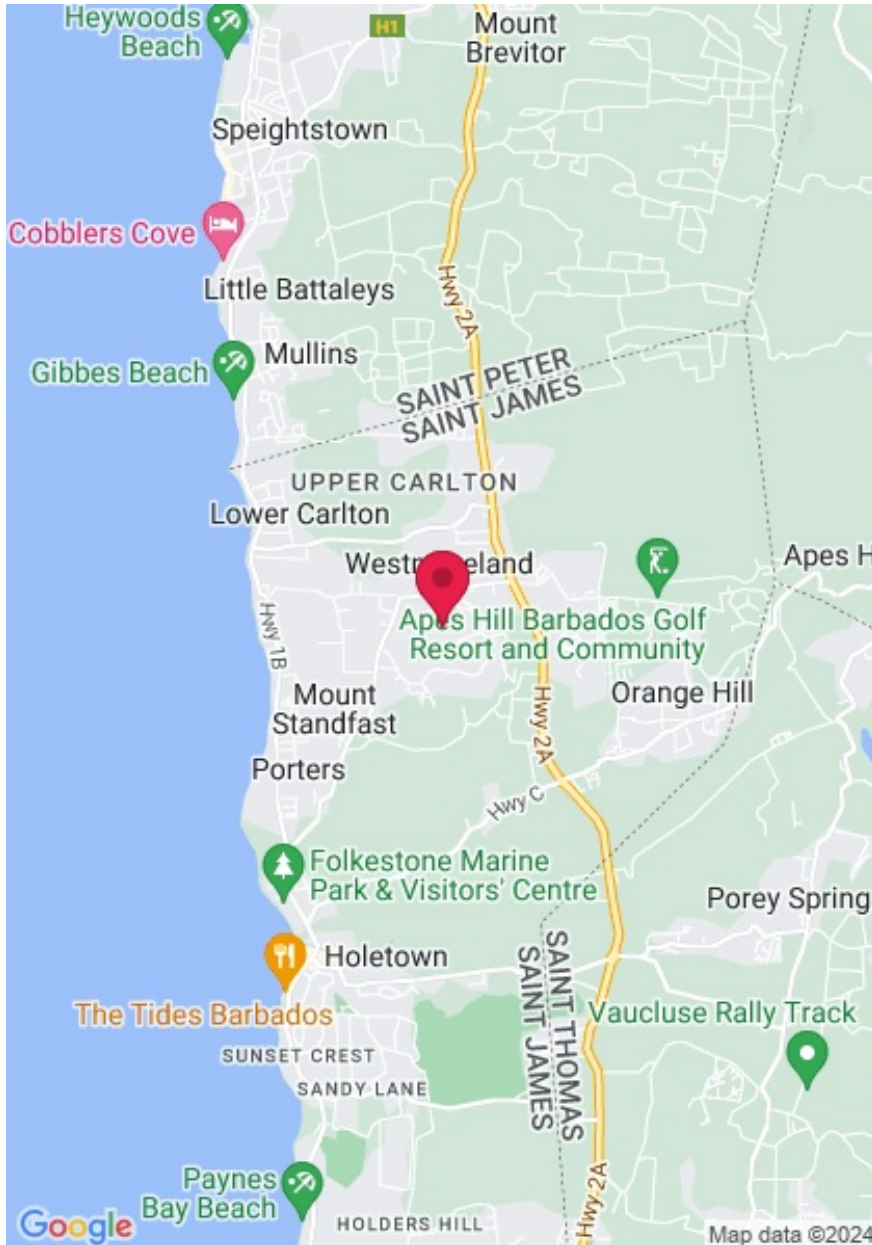
- Royal Westmoreland
- Pets Allowed
- Beach
- West Coast
- Dish Washer
- A/C Split
- Golf
- Dryer
- Pool
- Ceiling Fans
- Stove
- Washing Machine
- Ridge View
- Refrigerator
- Oven
- Golf Community
- Tennis
- Sea Views



# FOR SALE

## Shamal

### MAP



### WITHIN 5 MINUTES OF...

#### Barbados Best Beaches

- 1.8 km Alleyne's Bay
- 1.9 km Reed's Bay
- 2.4 km Gibbs Bay
- 2.7 km Heron Bay
- 2.7 km Gibbs Beach
- 3.0 km Mullins Beach
- 3.8 km Cobbler's Cove Beach
- 4.5 km Sandy Lane Bay

#### East Coast Viewing Spots

- 3.5 km Wildlife reserve

#### Golf

- 0.2 km Royal Westmoreland Golf Course
- 2.1 km Apes Hill Golf Course

#### Museums & Historical Sites

- 4.4 km Arlington Museum

#### Museums and Historical Sights

- 2.8 km Folkstone Marine Park and Museum

#### Nightlife

- 3.1 km Jamestown
- 3.1 km Red Door

#### Polo

- 1.5 km Apes Hill Polo Club

#### Restaurant

- 2.6 km Horny Ram Pub
- 3.1 km Pepenero

#### Restaurants

- 1.8 km Lone Star
- 1.8 km Palm Terrace @ Royal Pavilion
- 2.7 km The Mews
- 2.7 km Coral Reef Club
- 2.9 km Sea Shed
- 3.1 km Second Street, Holetown
- 3.1 km Sitar
- 3.1 km Fusion Rooftop (Limegrove)
- 3.1 km Lemongrass (Limegrove)
- 3.1 km Nishi
- 3.2 km First Street, Holetown
- 3.4 km Zaccios
- 3.6 km The Tides
- 3.6 km The Beach House
- 4.4 km Outpost at 1.11 East
- 4.4 km The Local & Co.
- 4.5 km Sandy Lane County Club
- 4.5 km Bajan Blue (Sandy Lane)
- 4.5 km L'Acajou (Sandy Lane)

- 4.5 km Little Bristol Bar

### **Shopping**

- 2.0 km The Shops of Fairmont Royal Pavilion
- 3.2 km Limegrove Lifestyle Centre
- 3.2 km Singapura, Limegrove
- 3.2 km Wine World Inc., Holetown
- 3.4 km West Mall Shopping Centre
- 3.5 km The Gourmet Shop
- 3.5 km Chattel Village
- 4.1 km Sunset Crest Shopping Mall
- 4.5 km The Shops, Sandy Lane Hotel

### **Supermarkets**

- 3.4 km Massy Complex, Holetown
- 4.3 km Jordans Supermarket, Speightstown

### **Tennis**

- 3.6 km West Side Tennis Centre

Terra Luxury, Newton House, Battaleys, St. Peter BB 26094, Barbados - Tel: 1 622-2618.  
Toll free US and Canada: 1-844-333-8888

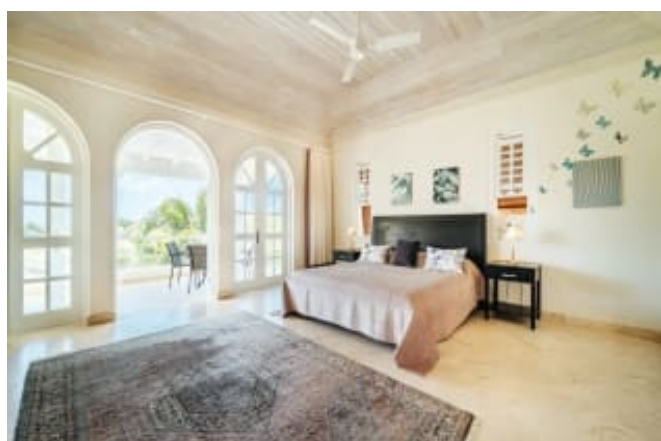
**[www.terraluxury.com](http://www.terraluxury.com)**

f.<http://www.facebook.com/TerraLuxuryBarbados/>  
t.[http://twitter.com/Terra\\_Luxury](http://twitter.com/Terra_Luxury)  
i.<http://www.instagram.com/terraluxury>

Errors & Omissions Excepted

# FOR SALE

## Shamal



Terra Luxury, Newton House, Battaleys, St. Peter BB 26094, Barbados - Tel: 1 622-2618.  
Toll free US and Canada: 1-844-333-8888

**[www.terraluxury.com](http://www.terraluxury.com)**

f.<http://www.facebook.com/TerraLuxuryBarbados/>  
t.[http://twitter.com/Terra\\_Luxury](http://twitter.com/Terra_Luxury)  
i.<http://www.instagram.com/terraluxury>

Errors & Omissions Excepted



# FOR SALE

## Shamal



Terra Luxury, Newton House, Battaleys, St. Peter BB 26094, Barbados - Tel: 1 622-2618.  
Toll free US and Canada: 1-844-333-8888

**[www.terraluxury.com](http://www.terraluxury.com)**

f.<http://www.facebook.com/TerraLuxuryBarbados/>  
t.[http://twitter.com/Terra\\_Luxury](http://twitter.com/Terra_Luxury)  
i.<http://www.instagram.com/terraluxury>

Errors & Omissions Excepted

# FOR SALE

## Shamal



Terra Luxury, Newton House, Battaleys, St. Peter BB 26094, Barbados - Tel: 1 622-2618.  
Toll free US and Canada: 1-844-333-8888

**[www.terraluxury.com](http://www.terraluxury.com)**

f.<http://www.facebook.com/TerraLuxuryBarbados/>  
t.[http://twitter.com/Terra\\_Luxury](http://twitter.com/Terra_Luxury)  
i.<http://www.instagram.com/terraluxury>

Errors & Omissions Excepted