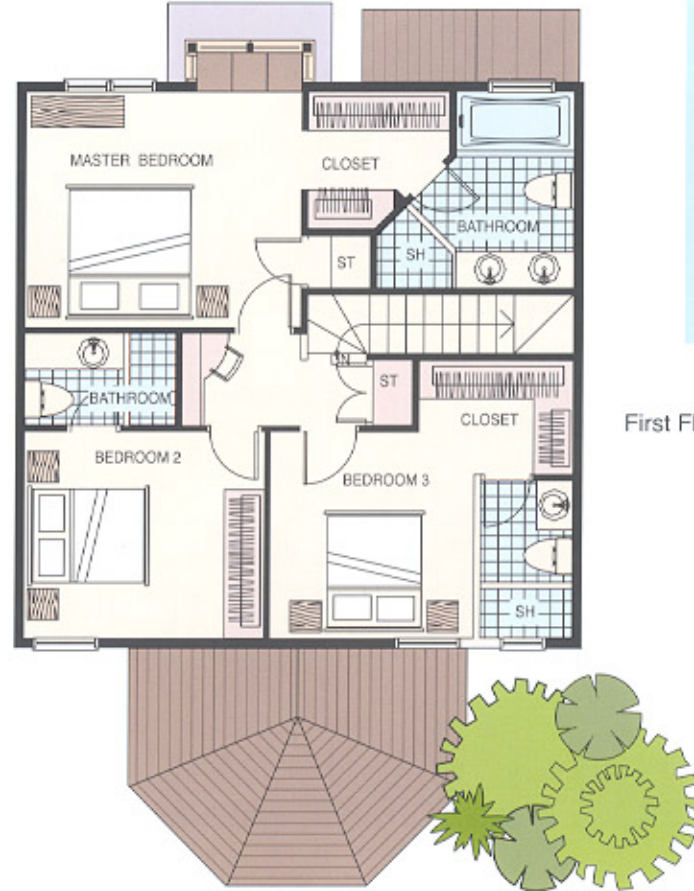
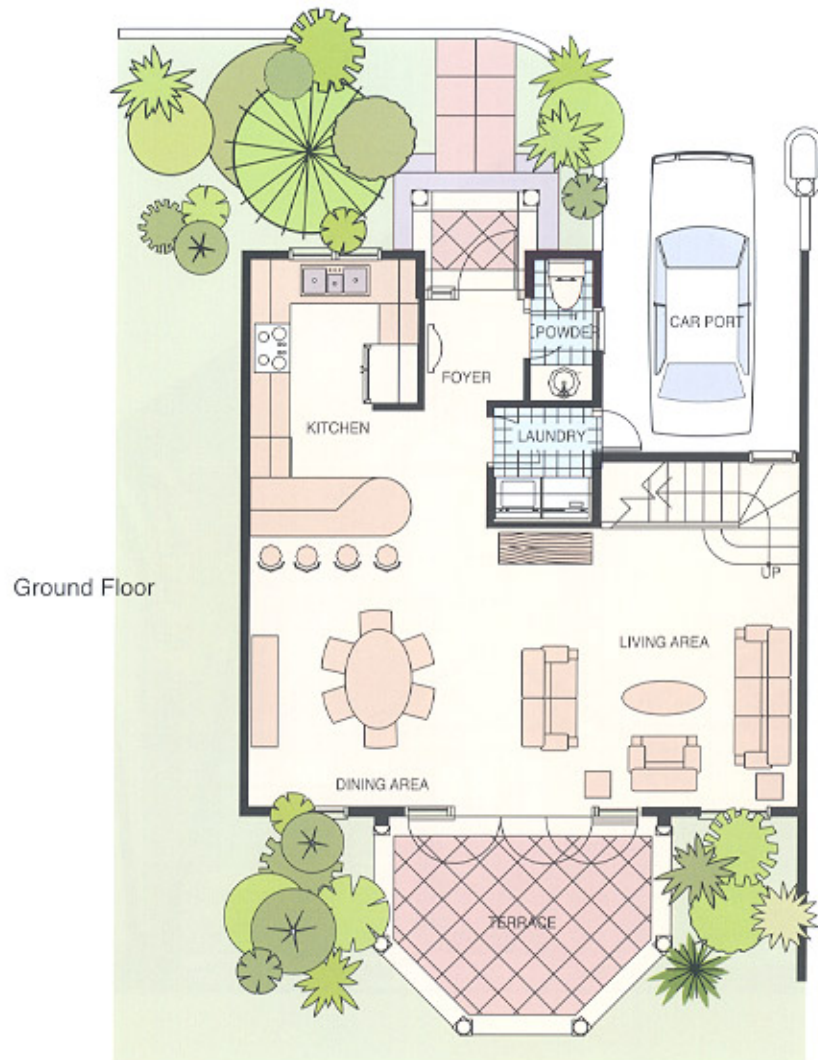




THREE BEDROOM TOWNHOUSE ELEVATION

Design: B



LIVING AREA	14'-10" x 14'-0"
DINING AREA	14'-0" x 13'-10"
FOYER	5'-2" x 5'-0"
KITCHEN	12'-9" x 8'-4"
MASTER BEDROOM	14'-0" x 12'-0"
BEDROOM 2	10'-6" x 10'-2"
BEDROOM 3	10'-6" x 10'-2"
LAUNDRY ROOM	5'-9" x 5'-0"
TOTAL SQ. FT.	1634 SQ. FT.

THREE BEDROOM TOWNHOUSE FLOORPLAN

Design: B